



An experimental study of the seismic behavior of infilled RC frames with opening

H. Tekeli* and A. Aydin

Department of Civil Engineering, Suleyman Demirel University, Isparta, Turkey.

Received 11 October 2015; received in revised form 21 April 2016; accepted 2 July 2016

KEYWORDS

Infill wall;
Opening;
Reinforced concrete buildings;
Cyclic lateral loading;
Location and size of the openings.

Abstract. Infill walls are not generally taken into account in structural analysis due to their complex behavior at seismic actions. As it is known, they increase the stiffness as well as the lateral load capacity of the system. Sometimes, infill walls may have window and door openings in their planes. In the present study, behavior of Reinforced Concrete (RC) frames with infill walls, which have openings, is investigated under cyclic lateral loadings. Location and size of the openings in the infill wall are selected as investigation parameters. Test specimens are constructed and experimentally analyzed. The infill wall changes the behavior of the frames under cyclic lateral loads significantly. Location and size openings in the infill wall are two main parameters that affect the behavior of the infill walls as well as the frame. The test results clearly show that the contribution of the infill wall to the behavior of RC frame diminishes significantly when the opening ratio is larger than 9%. Therefore, the effect of the opening in the infill wall must be taken into account in the structural modeling when the opening ratio is larger than 9%.

© 2017 Sharif University of Technology. All rights reserved.

1. Introduction

Reinforced Concrete (RC) frames with masonry infill walls are widely used in structural systems in many parts of the world. It is known that influence of infill walls on the behavior of frames, which are subjected to earthquake loadings, is very important in some cases. If the infill walls are uniformly distributed throughout the structure, then they usually have a beneficial effect on the seismic response of the structure. On the other hand, negative effects can appear due to irregular positioning of the infill walls in plan, and especially in elevation [1]. Even with symmetric layout, irregularity can be expected due to partial failure of these walls.

Infill walls have attracted the attention of many researchers since the early 1950s. A large number of researchers have studied the behavior of infilled steel and RC frames subjected to in-plane and out-of-plane lateral loads. These studies have involved both experimental and numerical analyses.

Uva et al. [2] have investigated the role of masonry infill in the seismic behavior of RC frames, pointing out some relevant questions about the sensitivity to the material parameters and the choice of the modelling approach. Chrysostomou and Asteris [3] have considered the in-plane behavior and in-plane failure modes of infilled frames and presented simplified methods for predicting these failure modes. Ricci et al. [4] have analyzed the effect on the elastic period of vibration of infill contribution to lateral stiffness of RC buildings. Shing and Mehrabi [5] have summarized some of the recent findings and developments of the behavior and modelling of infilled structures. Koutromanos et al. [6] have investigated the behavior of masonry-infilled reinforced concrete frames under cyclic lateral loading by

*. Corresponding author. Tel.: +90 246 2111190;
Fax: +90 246 2370859
E-mail addresses: hamidetekeli@gmail.com (H. Tekeli);
asim09aydin@hotmail.com (A. Aydin)

using nonlinear finite element models. Most of these studies have shown that use of masonry infill walls has a significant impact not only on the strength and stiffness but also on the energy dissipation mechanism of the overall structure. Celarec et al. [7] have investigated the sensitivity of the seismic response parameters to the uncertain modeling variables of the infill walls and frame. Campione et al. [8] have improved an equivalent diagonal pin-jointed strut model taking into account the stiffening effect of vertical loads on the infill in the initial state. Martinelli et al. [9] have proposed a simplified procedure based on NonLinear Static (NLS) analysis for evaluating the seismic response of masonry infilled RC frames.

Amanat and Hoque [10] and Kose [11] have investigated the parameters affecting the fundamental period of RC buildings with infill walls. Asteris et al. [12] have presented a detailed and in-depth analytical investigation of the parameters that affect the fundamental period of reinforced concrete structure. From the analysis of the results, it has been found that the number of stories, the span length, the stiffness of the infill wall panels, the location of the soft stories, and the soil type are crucial parameters that influence the fundamental period of RC buildings.

Pujol and Fick [13] have reported experiments on a full-scale building structure performed to address questions about the potentially positive or negative effects of masonry infill walls. The study has focused on the assumption that measures are taken to prevent out-of-plane failure of masonry panels. Tu et al. [14] have conducted shaking table tests on four full-scale single-story structures to investigate the out-of-plane behavior of unreinforced masonry (URM) panels in RC frames. They have presented an analytical model for the out-of-plane behavior of masonry panels in accordance with the rocking mechanism. Arulselvan et al. [15] have tested a frame having five stories and three spans with a central portion infilled with brick under cyclic loading simulating seismic action. Analytical studies have been carried out as well to study the stiffness, strength, and behavior of these types of frames.

Infill walls may have window and door openings. Asteris [16] has analytically investigated the influence of the masonry infill panel opening on the reduction in the stiffness of the infilled RC frames. A parametric study has been carried out by adopting location and size of the masonry infill panel opening as investigation parameters. Altin et al. [17] and Anil and Altin [18] have investigated the behavior of ductile Reinforced Concrete (RC) frames strengthened by addition of partial infills under cyclic lateral loading. Steel frames with masonry infills having openings have been tested by Tasnimi and Mohebbkhah [19], and Liu and Manesh [20].

Experimental studies have been carried out by Voon and Ingham [21], Kakaletsis and Karayannis [22], Mansouri et al. [23] related to walls with openings. Voon and Ingham [21] have presented test results of eight partially grout-filled perforated concrete masonry walls subjected to cyclic lateral loading. The eight walls had variations in lintel reinforcement detailing. Test results obtained from this research indicated that the size of openings and the length of trimming reinforcement significantly affected the lateral strength of perforated masonry walls. Kakaletsis and Karayannis [22] have investigated the influence of masonry openings on the seismic performance of infilled reinforced concrete frames, designed according to the current code provisions. The investigated parameters were the shape and the size of the opening. In all the examined cases, the shear strength of columns was higher than the cracking shear strength of solid infill. The experimental results showed the significance of various forms of openings in the reduction of strength, stiffness, and energy dissipation capability for all the examined cases of infilled frames. Mansouri et al. [23] have presented the influence of openings on lateral behavior of low-shear-strength masonry infilled reinforced concrete frames. The design of the reinforced concrete frames aimed to reflect common seismic design deficiencies. Six half-scale single-story, single-bay frame specimens were tested under in-plane lateral loading. The aspect ratio (h/l) of infill wall was equal to 0.62. The investigated parameters were shape (window and door), size (regular and large windows), and location of the openings (eccentric and central in horizontal direction). The results indicated that presence of openings altered the failure mode, increased the damage level, and reduced ductility, strength, and stiffness of the infilled frame.

The failure mechanism of an infilled frame is quite complex and depends upon a large number of factors such as the relative strength and stiffness properties of the infill wall and the frame. Although the subject of infilled frames has been studied for a long time, there are still questions to be investigated and answered about their behavior and interaction with the frame. Generally, window and door openings are formed in the infill wall to satisfy architectural requirements of the buildings; however, they create various modelling difficulties. In FEMA 306 [24], it is stated that “In spite of the general success of modelling infilled frames with solid panels, major difficulties still remain unresolved regarding the modeling approach for infilled frames with opening”. Despite all these difficulties in the modeling of infill walls with and without openings, seismic behavior of infill walls is still a popular subject for experimental and numerical studies.

The seismic safety evaluation of masonry infill walled reinforced concrete buildings requires appro-

priate macro-models for infill walls that have been calibrated by experimental results. Because of limitation of experimental data, most of the existing models have been developed by finite element analyses and have not been verified by experimental results. Therefore, more experimental investigation is required for predicting the stiffness and strength of infilled frames with openings.

The purpose of this study is to investigate the effects of infill walls with openings on the behavior of the RC frames, and improve experimental data in the literature to deal with the infill wall having opening. Thus, the macro model of infill wall having opening can be developed by using the experimental results. An experimental study has been carried out by using variables that are related to the location and size of window opening in the infill walls. In the four specimens, the opening is located in the middle of the infill wall whereas in the other four specimens, the opening is located on the upper left part of the diagonal. Openings of the infill walls are located on the diagonal of all specimens.

The design of the reinforced concrete frames in this study aims to reflect common seismic design deficiencies, such as insufficient transverse reinforcements at column and beam ends, lack of transverse reinforcement at beam-column joints, and weak column/strong beam connections that are encountered frequently in practice. The results of the study including failure mode, lateral load capacity, energy dissipation, and the lateral stiffness of the frame with infill walls are investigated and given in figures comparatively.

2. Experimental work

2.1. Description of the test specimens

Ten test specimens are constructed with 1/3 scale and tested under cyclic lateral loading. Span length and height of the frame in all specimens are kept constant at 1500 mm and 1200 mm, respectively.

Cross sectional dimensions of columns and beams are given in Figure 1. Longitudinal reinforcements of columns and beams consist of 10-mm bars. Stirrups are provided for the columns and beams as 6-mm diameter bars with 135° hooks. Spacing between the stirrups is 80 mm. The design of the reinforced concrete frames in this study aims to reflect common seismic design deficiencies, such as insufficient transverse reinforcements at column and beam ends, lack of transverse reinforcement at beam-column joints, and weak column/strong beam connections that are encountered frequently in practice. A typical layout of the beam and the column along with reinforcing details is presented in Figure 1. Properties of the reinforcement used in the study are listed in Table 1.

Tests for evaluation of concrete compressive strength (f_c) are carried out on 150 mm × 300 mm concrete cylinders, and average strength values (f_c) on 28 days for each frame are given in Table 2. Three types

Table 1. Average values of the yield stress of the reinforcing bars.

Bar diameter (mm)	f_{sy} (MPa)	f_{su} (MPa)
6	374	476
10	449	524
16	452	536

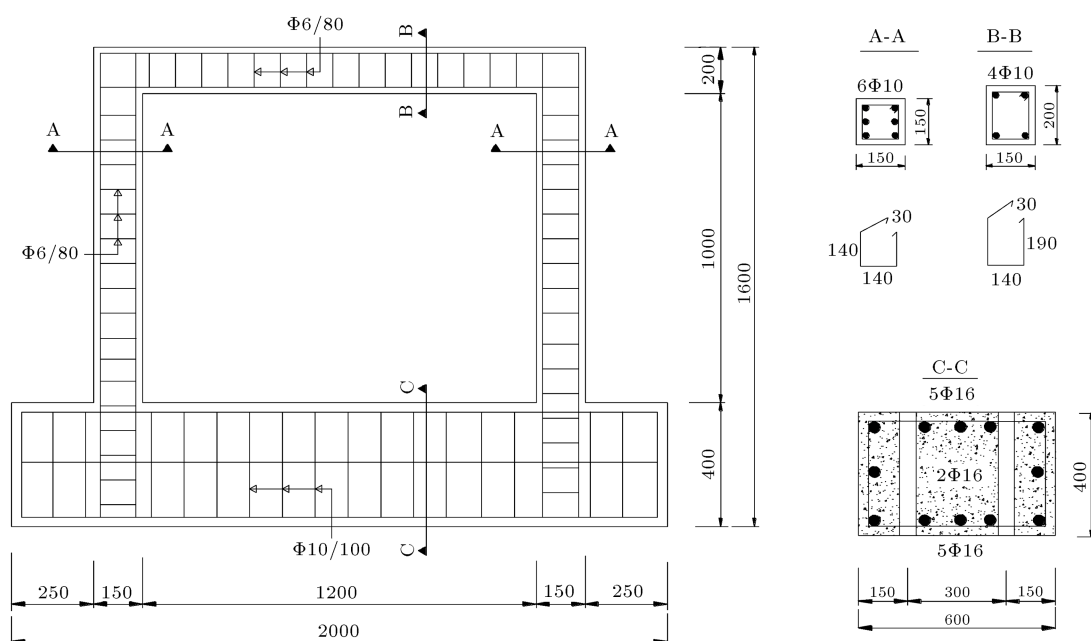
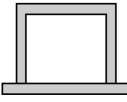
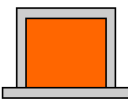
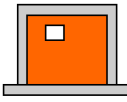
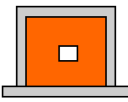
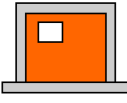
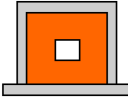
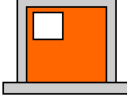
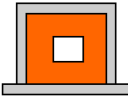
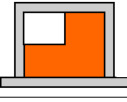



Figure 1. Dimensions and reinforcement details of the specimens (mm).

Table 2. Location and ratio of the opening on infill wall.

Specimen ID	f_c (MPa) frame	Opening percentage%	Opening position	Specimen ID	f_c (MPa) frame	Opening percentage%	Opening position
Specimen 1	21	100		Specimen 2	20	0	
Specimen 3	23	4		Specimen 4	21	4	
Specimen 5	21	9		Specimen 6	21	9	
Specimen 7	22	16		Specimen 8	20	16	
Specimen 9	20	25		Specimen 10	22	25	

of frames are constructed for the experimental tests. The first type does not have any infill wall (bare frame), the second has a solid infill wall (without opening), and the third includes partial openings at different locations of the infill wall. Table 2 summarizes the properties of each specimen.

The infill walls in the frames are constructed by using 1/3 scale hollow clay tiles with dimensions of 55 mm \times 100 mm \times 100 mm after finishing the construction of the frame. The aspect ratio (h/l) of infill wall is equal to 0.83. A rough plaster is applied on both sides of the infill walls where regular masonry units are connected to each other by a regular mortar. The thickness of the plaster used at the two faces of the brick walls is 10 mm, and total thickness of infill wall is 120 mm. The infill walls are not constructed on the symmetric axis of the frame to simulate the exterior walls of the building. The mortar and plaster mixture contains one part cement, one part lime, and four parts sand according to the common construction practice. The sand used has a maximum aggregate size of 3 mm. The average compressive strengths of the mortar and plaster used in the construction of the masonry walls of the specimens are found to be around 3.5 MPa.

Openings of the infill walls are located on the diagonal of all specimens, where strut is expected to appear when the frame is subjected to a lateral load. In the four specimens, the opening is located in the middle of the infill wall whereas in the other four specimens, the opening is located on the upper left part of the diagonal (Figure 2). Ratios of the opening area to the infill wall area are selected to be 4%, 9%, 16%, and 25% where the rectangular

openings are chosen to be 240 mm \times 200 mm, 360 mm \times 300 mm, 480 mm \times 400 mm, and 600 mm \times 500 mm, respectively, where dimensions represent the length and height of the opening in the x and y directions, respectively (Figure 2).

The compressive strength of the infill wall is found to be 5.0 MPa. All samples are painted with lime whitewash in order that cracking in the RC frame and in the infill wall can be observed clearly during the test.

2.2. Test setup

Test setup is shown in Figure 3. After the specimens have been bolted to the rigid floor by the foundation beam at the bottom, tests are carried out by applying reversed cyclic lateral loading. Each load cycle consists of push and pull loading steps. The lateral load is applied at the beam level and increases by 5 kN at each loading step. Loading in the tests is continued until the infilled frame reaches its lateral load capacity in load control manner. Then, the test is continued in displacement control in order to obtain the load-displacement curve until a decrease of 15% in the maximum load is reached. Furthermore, in order to provide a right angle (90°) between the load cell and the frame during the loading, a hinge is used as shown in Figure 3. The lateral displacements are measured by using LVDTs (Linear Variable Differential Transformers). The locations of LVDTs are also shown in Figure 3. After each loading cycle, cracks and damage mechanisms in the specimens are observed and recorded. A bracing system is employed to prevent out-of-plane movement of the specimens, as shown in Figure 4.

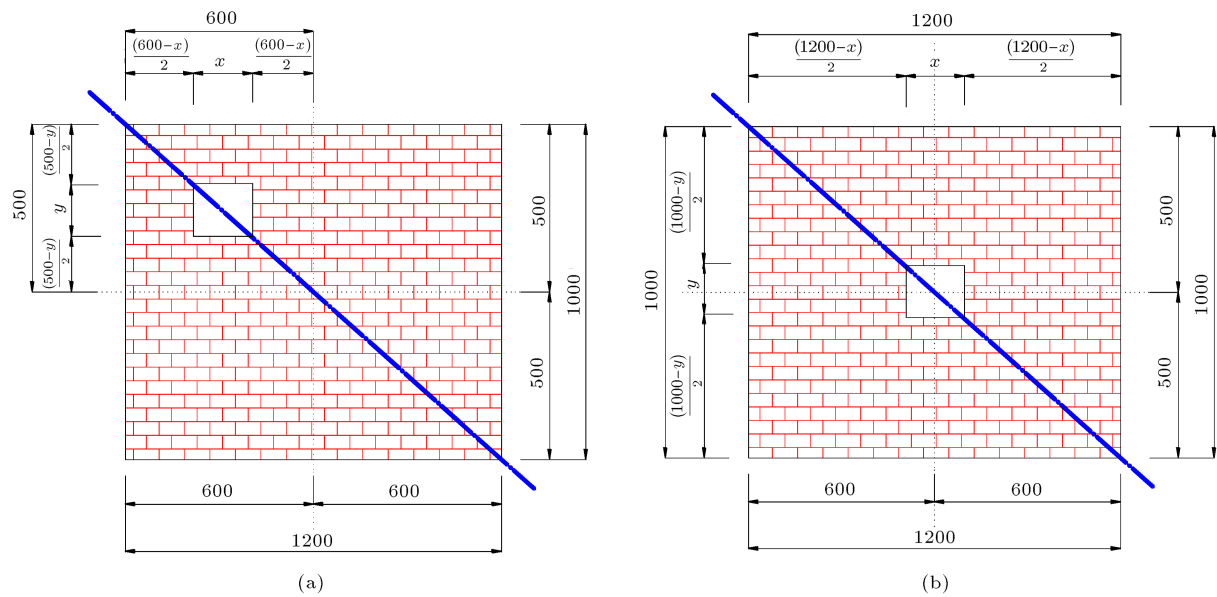


Figure 2. Location of the openings on the infill wall (mm).

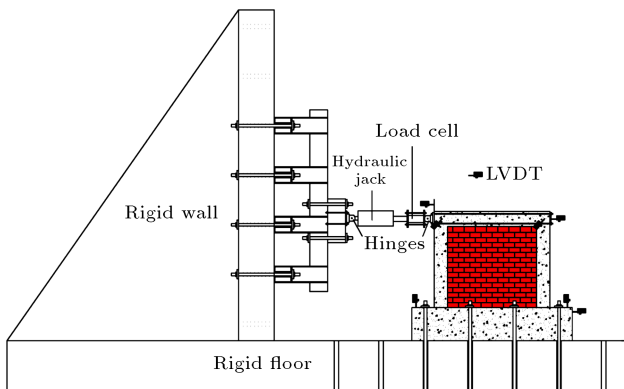


Figure 3. Test setup.



Figure 4. Bracing system against out-of-plane movement of the specimens.

3. Experimental results

3.1. Observed damage in the specimens

Distributions of the damage in the specimens are observed and recorded throughout the experiment. Figure 5 shows damage variations in Specimen 1 and Specimen 2. Specimen 1 represents the bare frame that has failed due to the column mechanism, i.e. due to

plastic hinges developed at both ends of the columns, as it is expected due to strong beam/weak column configuration. In Specimen 2, the separation cracks are firstly observed at the interface between the frame and the infill wall due to deformation dissimilarity. While vertical cracks are formed at the bottom and top of the infill wall, horizontal cracks are formed in the middle of the infill wall. Propagation of the horizontal cracking in the middle of the infill wall develops a diagonal crack under increasing lateral load. After the formation of a great number of hairline cracks on the infill wall, an increase in their widths is observed as well. The diagonal cracks in the infill wall are followed by shear failure at the bottom and top of the columns. This is due to the shear force applied by the strut developed in the infill wall. This fact indicates an increase in the design shear force at the columns as the horizontal component of the strut, to avoid brittle shear failure at the columns.

Crack configurations observed in all specimens with the infill walls having openings are given in Figure 6. As seen, the first cracks occur obliquely on the corner of the openings, where a stress concentration

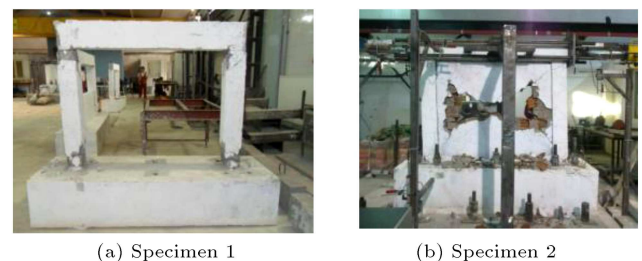


Figure 5. Damage observed in Specimen 1 and Specimen 2.

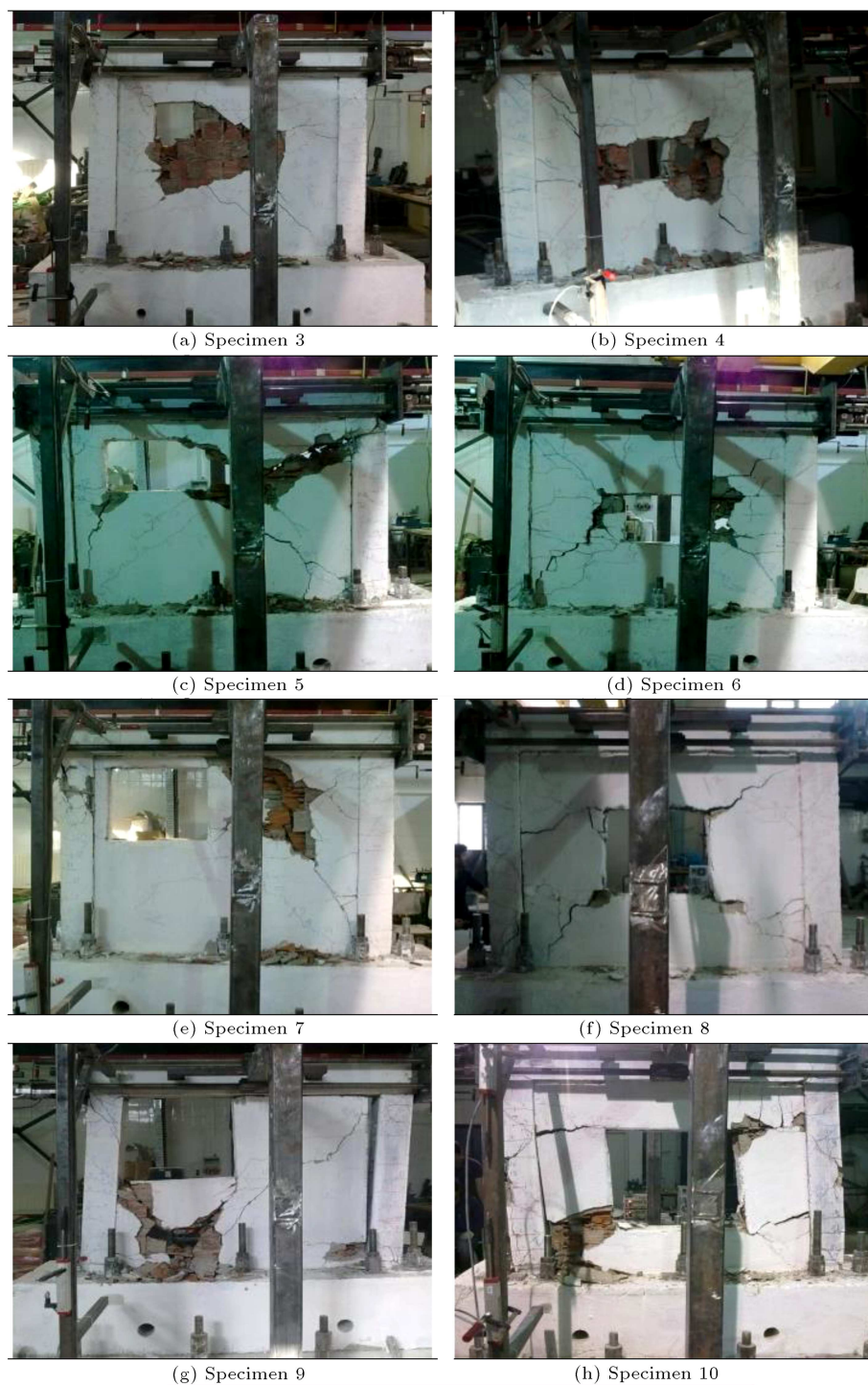


Figure 6. Damage observed in all specimens with the infill wall having opening.

is expected. Failure mechanisms of Specimens 3 and 4 are quite similar to that seen in Specimen 2. Probable reason for this is that the size of the opening in the infill wall is quite small.

In Specimen 5, a crack is formed from the bottom corner of the opening up to the upper corner of the frame. Later, the crack is widened under the increasing lateral load. The crack in the infill wall is extended to the column at the frame corner and causes a shear

failure at the top and bottom of the column, as observed in Specimen 2.

Cracking in the infill walls takes place outside the diagonal strip of the frame in Specimens 7 and 9, while cracking takes place along the diagonal of the frame in Specimens 6 and 8. Detailed inspection shows that cracking in Specimen 7 takes place in the area of the wall beside the opening obliquely whereas a diagonal crack is formed in the area of the infill wall under the

window opening in Specimen 9. As a result of the increase in the crack width in these specimens, the infill walls fail by losing their load carrying capacity. In Specimen 10, the starting point of the crack is at the window's corner and the crack continues horizontally towards the column. From the experiments, it is observed that the opening in infill walls changes the basic behavior of the frame and creates a new failure mechanism when the opening ratio is larger than 9%.

Generally, it is observed that the failure mechanism of frames that include the infill walls with opening depends mostly on the location and ratio of the openings.

3.2. Lateral load capacity of the specimens

Lateral load-displacement hysteretic curves that are obtained during the testing are illustrated in Figure 7. The tests clearly show that strength and stiffness of the frames significantly increase by the presence of infill walls. The largest lateral load capacity has been obtained 115 kN from Specimen 2, whereas the lowest lateral load capacity has been obtained 50 kN from Specimen 1. Lateral load capacity of the specimen with the solid infill wall has increased by almost 130% as compared to the specimen without infill wall. Envelope curves obtained from the lateral load-displacement hysteretic curves are shown in Figure 8. Lateral load capacities obtained from the tests are given in Figure 9 comparatively.

Lateral load capacity values in the pull and push directions are quite close to each other in the specimens (Specimens 4, 6, 8, and 10) having opening in the middle of the infill wall. In contrast, in the specimens (Specimens 3, 5, 7, and 9) having opening on the upper left part of the infill wall, the lateral load capacities in the push direction are generally larger than the lateral load capacities in the pull direction. A comparison of the two tests, which have the same ratios of opening in the middle and on the upper left part of the infill wall, yields that the lateral load capacity of the former is generally larger than that of the latter.

The lateral load capacities of Specimens 3 and 4 are almost equal to that of Specimen 2. As expected, the test results yield that as the opening ratio increases, the lateral load capacity of the specimen decreases, i.e. openings of 4, 9, 16, and 25%, lead to a decrease in the lateral load capacity of 1%, 10%, 20%, and 30%, respectively. It is worth noting that these values represent averages in different opening locations and different loading directions. The results obtained from tests show that the contribution of the infill walls to the lateral load capacity of the frame decreases significantly when the opening ratio is larger than 9%.

3.3. Story drift ratios

Story drift ratios are obtained for the all specimens in

two different ways. First, story drift ratios are calculated for all specimens corresponding to a lateral load capacity (50 kN) of the bare framed specimen. The highest and the lowest story drift ratios are observed in the bare frame and solid infill walled specimen by 1.1% (0.86%) and 0.1% (0.13%), respectively, under pull (push) lateral loadings. The obtained results show that the story drift ratios increase as the openings on the infill walls increase. Second, story drift ratios corresponding to the ultimate load capacity of each specimen are obtained. Except the specimens with the opening of 25%, the highest value for the story drift ratio has been observed in bare frame while the lowest value has been observed in solid infill walled frame. These corresponding drift values are at the order of 0.9-1.1% (0.7-0.9%) under pull (push) lateral loadings, except for the specimens with the opening of 25%. In the specimens with the opening of 25%, the story drift ratio is higher than that in the bare frame under both push and pull loadings. For example, Specimen 10 (with opening of 25%) has experienced 1.4% story drift ratio and lateral stiffness of 5.05 kN/mm with 80 kN of total load capacity, whereas these values for bare frame are 1.1%, 4.16 kN/mm, and 50 kN, respectively. This observation is due the fact that maximum story drift ratios are proportional to the corresponding ultimate lateral load capacities of the Specimens 10 and 1. Infill walls with openings contribute to the lateral stiffness and lateral load capacity of the frames. However, if the opening in the infill wall is higher than 16%, the story drift ratio corresponding to the lateral load capacity of specimen is observed to increase with respect to the bare frame. The obtained results clearly show that the effect of openings on story drift ratios is noteworthy. Increment in the story drift ratio becomes significant when the opening ratio is larger than 16% for both push and pull loadings. The opening becomes more effective when they are located in the middle part of the infill wall.

3.4. Stiffness and energy dissipation

Lateral stiffness of the specimens is calculated as the ratio of the lateral load to the lateral displacement at each cycle and presented in Figure 10. Specimen 2 exhibits the highest stiffness among all specimens while Specimen 1 has the lowest stiffness. The specimens which have openings in the middle of infill wall exhibit approximately equal stiffness values for lateral loads in the pull and push directions. The results show that the stiffness of the specimens decreases as the opening ratio increases. The lateral stiffness for the push loading in all specimens having openings on the upper left part of the infill wall is generally larger than the stiffness for the pull loading.

Energy dissipation is determined by calculating the areas inside the hysteretic load-displacement loops for each cycle, whereas the cumulative dissipated en-

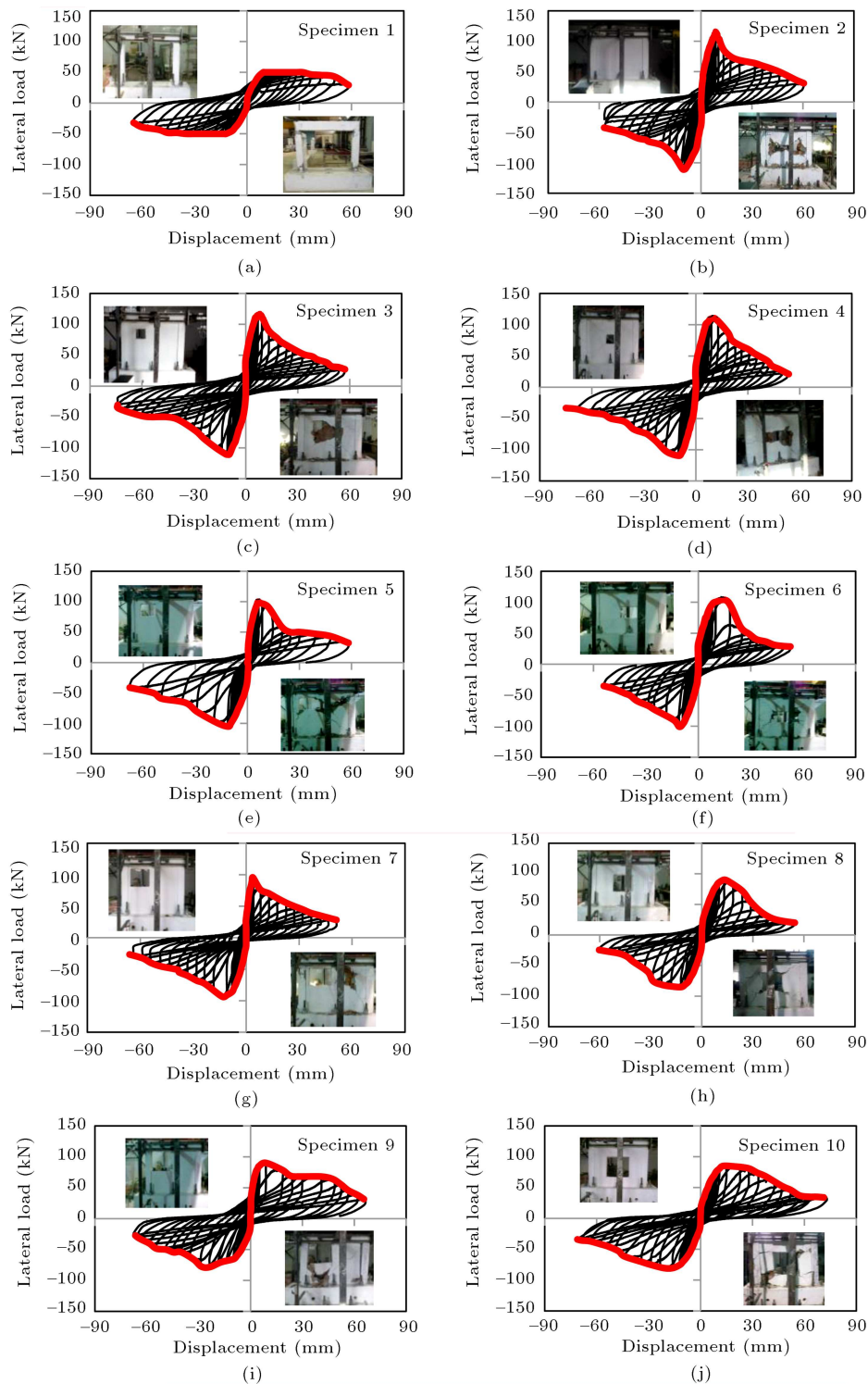


Figure 7. Lateral load-displacement hysteretic curves of all specimens.

ergy is evaluated as the sum of the areas of all previous hysteresis loops; cumulative energy dissipations are depicted in Figure 11.

It is apparent from Figure 11 that the lowest energy dissipation is observed in Specimen 1 among all specimens. Among all the infill walled specimens, Specimen 2 displays the largest amount of energy.

When the opening ratio is less than 9%, the amount of the energy dissipation is almost equal to that of the solid infill walled specimen.

4. Conclusions

In this study, the behavior of RC frames with infill

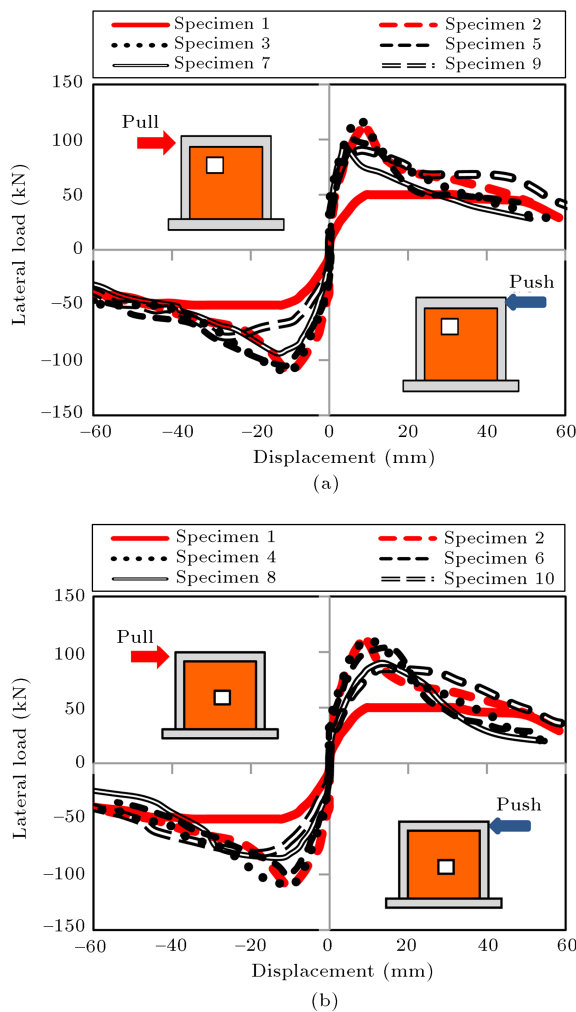


Figure 8. Envelope curves for all specimens.

walls having opening is investigated experimentally under cyclic lateral loadings. Location and ratio of the opening in the infill wall are selected as test parameters. RC frames with infill wall having opening are tested under reversed cyclic loading. Failure mode, lateral

load capacity, energy dissipation, and stiffness of each specimen are obtained from the experimental results. The following conclusions can be derived from this study:

1. Presence of infill walls having openings changes the behavior of the frame significantly. It also modifies the failure mechanism, as opening ratio increases, especially when it is larger than 9%;
2. The obtained results have shown that infill walls lead to significant increases in strength and stiffness of bare RC frames. Lateral load capacity of the solid infill walled specimen increases by about 130% as compared to the specimen without infill wall. The test results show that as the opening ratio increases, the lateral load capacity of the specimen decreases. When the opening ratio of the infill wall is 4, 9, 16, and 25%, the lateral load capacity approximately decreases by 1, 10, 20, and 30%, respectively. Furthermore, the test results yield that the contribution of the infill wall to the lateral load capacity of the frame decreases significantly when the opening ratio is larger than 9%;
3. Story drift ratios are obtained for all the specimens in two different ways. First, story drift ratios are calculated for all specimens corresponding to a lateral load capacity of the bare framed specimen. The highest and the lowest story drift ratios are observed in the bare frame and solid infill walled specimen. The obtained results show that the story drift ratios increase as the openings on the infill walls increase;
4. Second, story drift ratios corresponding to the ultimate load capacity of each specimen are obtained. In the specimens with the opening of 25%, the story drift ratio is higher than that in the bare frame under both push and pull loadings. This observation is due to the fact that maximum story

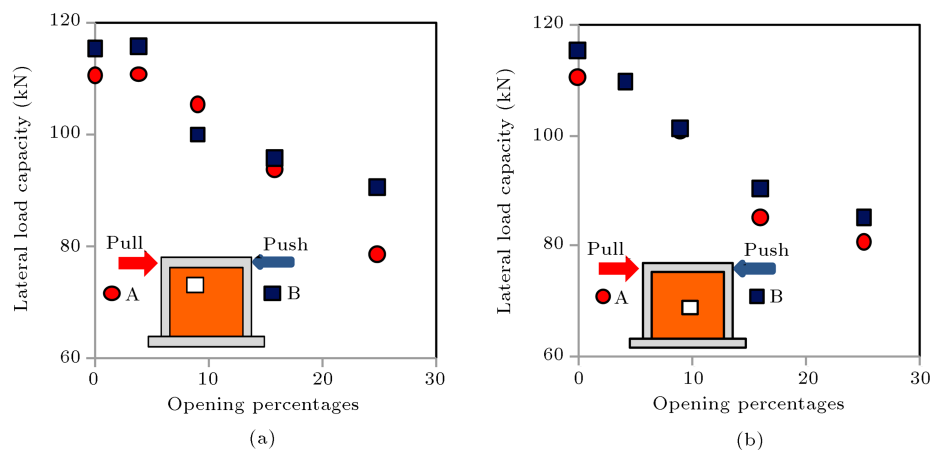


Figure 9. Lateral load capacities of all specimens.

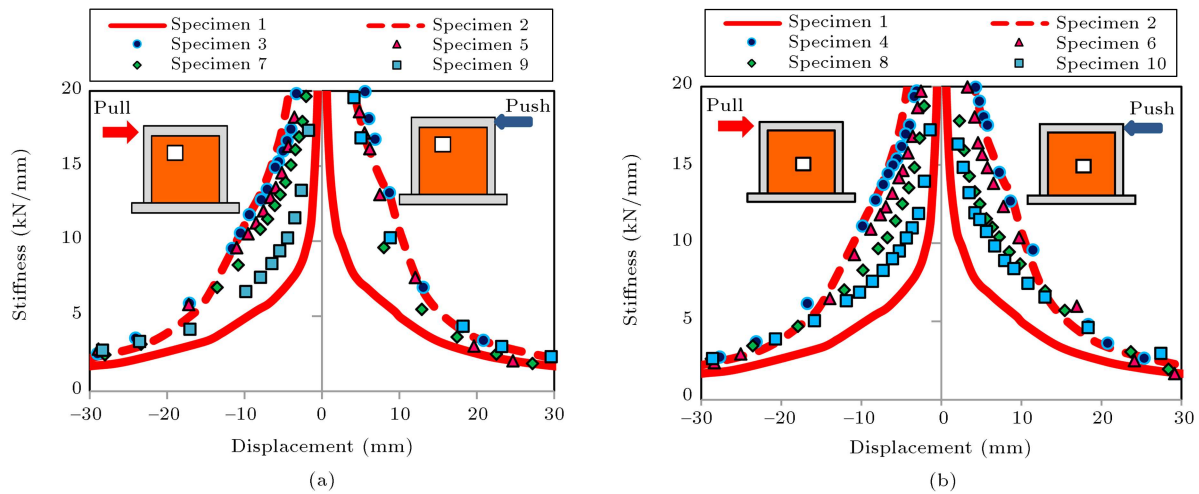


Figure 10. Variation of stiffness depending on displacement for all specimens.

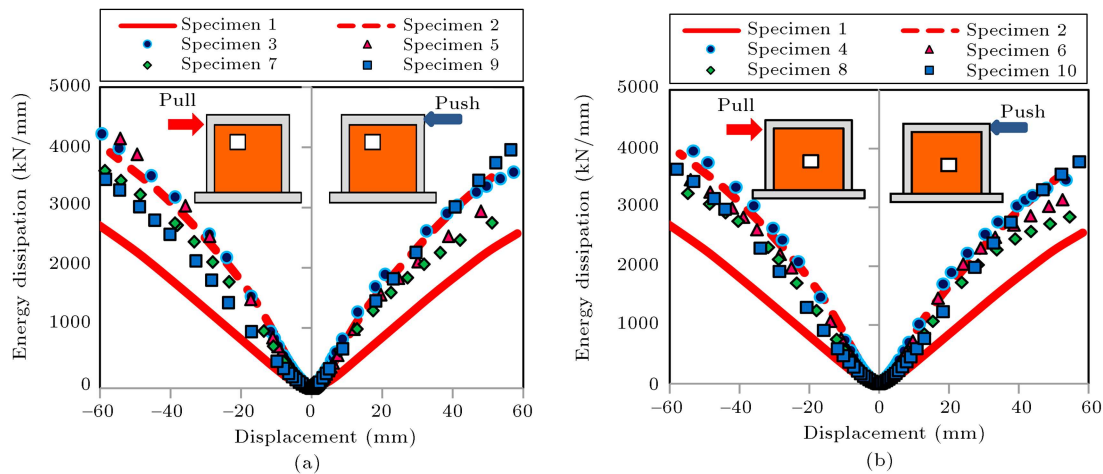


Figure 11. Energy dissipation depending on displacement for all specimens.

drift ratios are proportional to the corresponding ultimate lateral load capacities of the Specimens 10 and 1;

5. Infill walls with openings contribute to the lateral stiffness and lateral load capacity of the frames. However, if the opening in the infill wall is higher than 16%, the story drift ratio corresponding to the lateral load capacity of specimen is observed to increase with respect to the bare frame. The obtained results clearly show that the effect of openings on story drift ratios is noteworthy. Increment in the story drift ratio becomes significant when the opening ratio is larger than 16% for both push and pull loadings. The opening becomes more effective when they are located in the middle part of the infill wall;
6. Energy dissipation and stiffness of the specimen are significantly reduced with the increase in the ratio of the opening on the infill wall. Furthermore, the amount of energy dissipation is almost equal to that

of the solid infill walled specimen when the opening ratio is more than 9%;

7. Behaviors of the specimens under pull and push loadings are quite close to each other when the opening is located in the middle of the infill wall. However, the pull loading is generally more critical than the push loading, when the behavior of the specimen is considered, especially when the opening is located on the upper left part of the infill;
8. The test results clearly show that the contribution of the infill wall to the behavior of RC frame is greatly reduced when the opening ratio is larger than 9%. Therefore, the effect of the opening in the infill wall must be taken into account in the structural modeling when the opening ratio is larger than 9%;
9. In order to avoid brittle shear failure at the top and bottom of the columns of the frames with infill, the design shear force should increase by the horizontal component of the strut developed in the infill wall;

10. Experimental tests have shown that presence of openings significantly changes the behavior of infilled frames. The macro model of infill wall with opening can be developed by using the experimental results. Empirical equations can be proposed for estimating changes in lateral load capacity, energy dissipation, and the lateral stiffness of infill walled frames because of the presence of openings.

Acknowledgements

The study presented in this article was sponsored by the Research Project Coordination Unit of Suleyman Demirel University (SDU) under Project No. 3418-YL1-13 and Kelesoglu Construction Company. The experimental work of this study was conducted in the Structural and Earthquake Engineering Laboratory at SDU. The authors would like to thank Mr. Osman Akyurek, Mr. Metin Deniz, Mr. Necmi Kara, Mr. Emircan Hersat, Mr. Uğur Tosun, and Mr. Fatih Kaya for their assistance in conducting the experiments.

References

1. Dolšek, M. and Fajfar, P. "The effect of masonry infills on the seismic response of a four-storey reinforced concrete frame a deterministic assessment", *Engineering Structures*, **30**, pp. 1991-2001 (2008).
2. Uva, G., Raffaele, D., Porco, F. and Fiore, A. "On the role of equivalent strut models in the seismic assessment of infilled RC buildings", *Engineering Structures*, **42**, pp. 83-94 (2012).
3. Chrysostomou, C.Z. and Asteris, P.G. "On the in-plane properties and capacities of infilled frames", *Engineering Structures*, **41**, pp. 385-402 (2012).
4. Ricci, P., Verderame, G.M. and Manfredi, G. "Analytical investigation of elastic period of infilled RC MRF buildings", *Engineering Structures*, **33**, pp. 308-319 (2011).
5. Shing, P.B. and Mehrabi, A.B. "Behavior and analysis of masonry-infilled frames", *Prog. Struct. Engng Mater.*, **4**, pp. 320-331 (2002).
6. Koutromanos, I., Stavridis, A., Shing, P.B. and Willam, K. "Numerical modeling of masonry-infilled RC frames subjected to seismic loads", *Computers and Structures*, **89**, pp. 1026-1037 (2011).
7. Celarec, D., Ricci, P. and Dolšek, M. "The sensitivity of seismic response parameters to the uncertain modelling variables of masonry-infilled reinforced concrete frames", *Engineering Structures*, **35**, pp. 165-177 (2012).
8. Campione, G., Cavaleri, L., Macaluso, G. and Amato, G. "Evaluation of infilled frames: an updated in-plane-stiffness macro-model considering the effects of vertical loads", *Bull Earthquake Eng.*, **13**, pp. 2265-2281 (2015).
9. Martinelli, E., Lima, C. and Stefano, G.D. "A simplified procedure for nonlinear static analysis of masonry infilled RC frames", *Engineering Structures*, **101**, pp. 591-608 (2015).
10. Amanat, K.M. and Hoque, E. "A rationale for determining the natural period of RC building frames having infill", *Engineering Structures*, **28**, pp. 495-502 (2006).
11. Kose, M.M. "Parameters affecting the fundamental period of RC buildings with infill walls", *Engineering Structures*, **31**, pp. 93-102 (2009).
12. Asteris, P.G., Repapis, C., Tsaris, A.K. and Cavaleri, L. "Parameters affecting the fundamental period of infilled RC frame structures", *Earthquakes and Structures*, **9**(5), pp. 999-1028 (2015).
13. Pujol, S. and Fick, D. "The test of a full-scale three-story RC structure with masonry infill walls", *Engineering Structures*, **32**, pp. 3112-3121 (2010).
14. Tu, Y.H., Chuan, T.H., Liu, P.M. and Yang, Y.S. "Out-of-plane shaking table tests on unreinforced masonry panels in RC frames", *Engineering Structures*, **32**, pp. 3925-3935 (2010).
15. Arulselvan, S., Subramanian, K., Perumalpillai, E.B. and Santhakumar, A.R. "RC infilled frame-RC plane frame interactions for seismic resistance", *Journal of Applied Sciences*, **7**(7), pp. 942-950 (2007).
16. Asteris, P.G. "Lateral stiffness of brick masonry infilled plane frames", *Journal of Structural Engineering*, **129**(8), pp. 1071-1079 (2003).
17. Altin, S., Ersoy, U. and Tankut, T. "Hysteretic response of reinforced concrete infilled frames", *Journal of Structural Engineering*, **118**(8), pp. 2133-2150 (1992).
18. Anil, O. and Altin, S. "Experimental study on reinforced concrete partially infilled frames", *Engineering Structures*, **29**, pp. 449-460 (2007).
19. Tasnimi, A.A. and Mohebbkhah, A. "Investigation on the behavior of brick-infilled steel frames with openings, experimental and analytical approaches", *Engineering Structures*, **33**, pp. 968-980 (2011).
20. Liu, Y. and Manesh, P. "Concrete masonry infilled steel frames subjected to combined in-plane lateral and axial loading - An experimental study", *Engineering Structures*, **52**, pp. 331-339 (2013).
21. Voon, K.C. and Ingham, J.M. "Experimental in-plane strength investigation of reinforced concrete masonry walls with openings", *Journal of Structural Engineering*, **134**(5), pp. 758-768 (2008).
22. Kakaletsis, D.J. and Karayannis, C.G. "Experimental investigation of infilled reinforced concrete frames with openings", *ACI Structural Journal*, **106**(2), pp. 132-141 (2009).
23. Mansouri, A., Marefat, M.S. and Khanmohammadi, M. "Experimental evaluation of seismic performance of low-shear strength masonry infills with openings in reinforced concrete frames with deficient seismic

details”, *Struct. Design Tall Spec. Build.*, **23**(15), pp. 1190-1210 (2013).

24. “Evaluation of earthquake damaged concrete and masonry wall buildings”, prepared by the Applied Technology Council (ATC-43 project) for the Partnership for Response and Recovery. Federal Emergency Management Agency, Report No. FEMA-306, Washington, D.C. (1999).

Biographies

Hamide Tekeli is an Assistant Professor in the Civil Engineering Department at Suleyman Demirel

University in Isparta, Turkey. She received her PhD degree from Suleyman Demirel University in 2006. She specializes in the areas of behavior and modeling of reinforced concrete buildings. Her research focuses on experimental and theoretical studies.

Asim Aydin is an MSc student in the Civil Engineering Department at Suleyman Demirel University in Isparta, Turkey, and works as a Civil Engineer in the Kelesoglu Construction Company in Ankara, Turkey. His research interests include modeling of reinforced concrete structures, and repair and strengthening of earthquake-damaged structures.